

135 Bonham Strand
Trade Centre
文咸東街135商業中心

◆ 235 Wing Lok Street
Trade Centre
永樂街235商業中心

@Sheung Wan 上環



Shape Your Business Needs
塑造您的業務需求



135 Bonham Strand
Trade Centre
文咸東街135商業中心

毗鄰中環的營商首選 Building Your Business on Central's Doorstep

物業概覽

文咸東街135商業中心於2000年啟用，為樓高25層的高級商廈；地處上環，位置優越，可輕易往來香港各處，為眾多成功企業的選址。

Property Fast Facts

Opened in 2000, 135 Bonham Strand Trade Centre is a 25-storey high quality office building. Superb links to all parts of Hong Kong make this property the address of choice for many successful businesses.

一應俱全的商業設施

物業內出租的獨立辦公單位均配備各種預裝設施，包括假天花、地氈、窗簾及分體冷氣機等。全天候的專業管理服務，令租戶倍感安心。

A Full Range of Business-building Facilities

Office units possess a wealth of pre-installed facilities include full false ceilings, carpets, blinds and split-type air-conditioner. Comprehensive, round-the-clock professional management services will further add to tenants' peace of mind.

多樣化的樓層設計

物業可出租總面積約63,915平方呎，分佈於24個辦公樓層和地下零售區。可出租面積由402平方呎的獨立單位至整層2,988平方呎（6樓至24樓），間隔靈活實用。

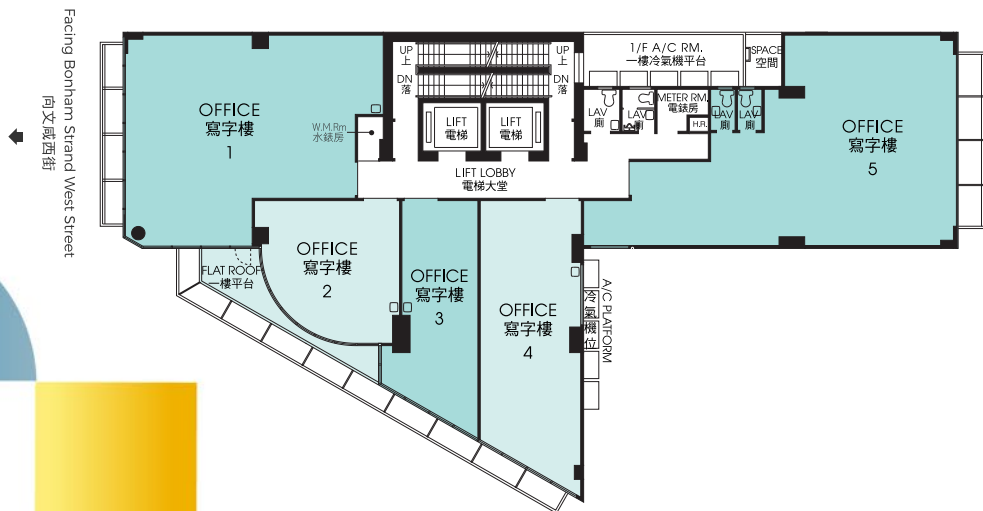
A Choice of Flexible Floor Plans

The property offers a total Gross Rentable Area of approximately 63,915 sq. ft. spread across its 24 office floors and G/F retail area. Spaces range from 402 sq. ft. individual units to 2,988 sq. ft. entire floors (6/F to 24/F). An effective floor layout offers flexible floor division options.

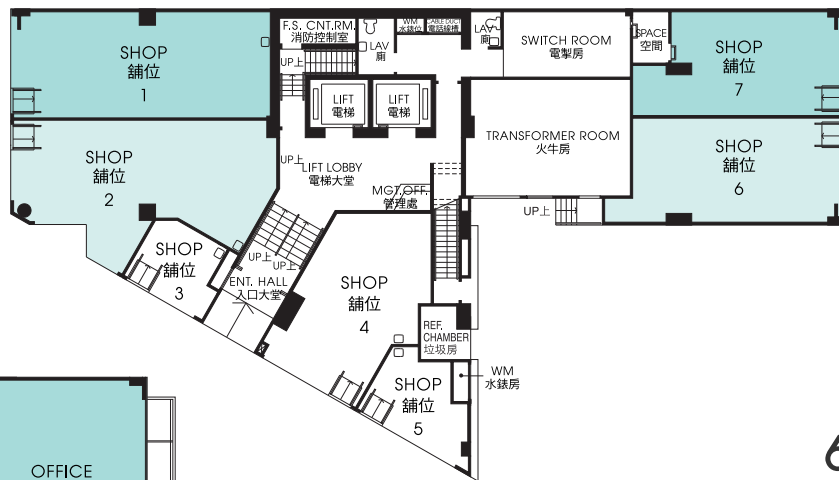


平面圖
Floor Plans

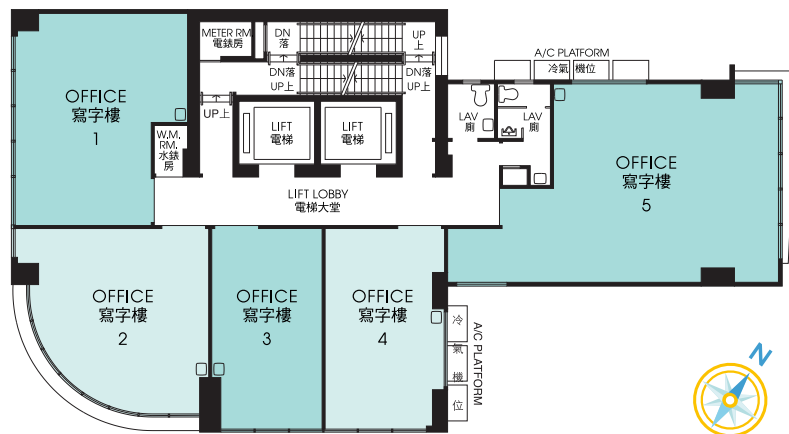
平面圖 Floor Plan



平面圖 Floor Plan



平面圖 Floor Plan



Facing Wing Lok Street (Harbour View at High Floor)
向永樂街 (高層海景)



通往香港、內地及全球的門戶

Your Gateway to Hong Kong, China and the World

物業概覽

永樂街 235 商業中心於 2000 年正式啟用，樓高 26 層，位於繁華的上環商業區。只需數分鐘便可步行至中環各大商廈、餐廳及商舖。高層單位擁有迷人的維港景致，令租戶賞心悅目。

A Glance of Property

Opened in 2000, 235 Wing Lok Street Trade Centre is a 26-storey office building in the thriving Sheung Wan commercial hub. Just a few minutes walk to major offices, restaurants and shops in Central. Tenants can enjoy stunning harbour views on high level units.



一應俱全的商業設施

大廈的辦公單位配備各種預裝設施，包括功能全面的假天花、分體冷氣機及地氈，租戶可隨時遷入使用。永樂街 235 商業中心作為高級現代商廈，提供全天候的專業管理服務。

Comprehensive Building Facilities

The ready to rent office units offer many pre-installed facilities including fully functional false ceilings, split-type air-conditioners and carpets. Professional, round-the-clock management services are all one would expect of a first class modern office building.

多元化的樓層設計

大廈可出租總面積約 52,285 平方呎，分佈於 25 個辦公樓層以及地下零售區。可出租辦公面積由 557 平方呎到 1,364 平方呎不等。

A Flexible Choice of Floor Plans

The property offers a Gross Rentable Floor Area of approximately 52,285 sq. ft. spread across its 25 office floors and G/F retail area. Spaces range from 557 sq. ft. to 1,364 sq. ft.,

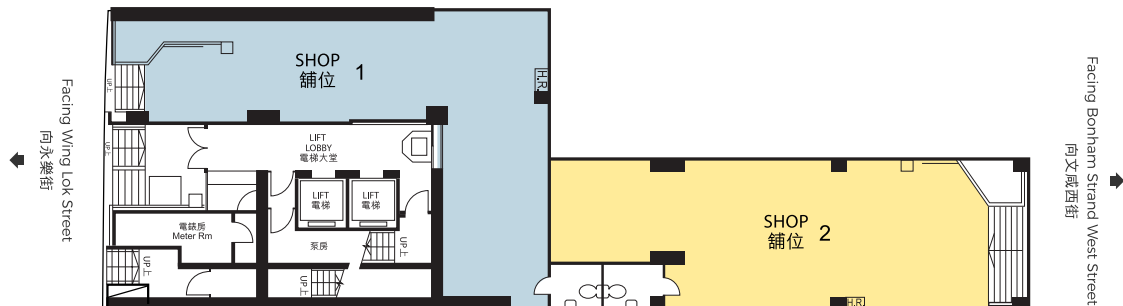
235 Wing Lok Street
Trade Centre
永樂街235商業中心



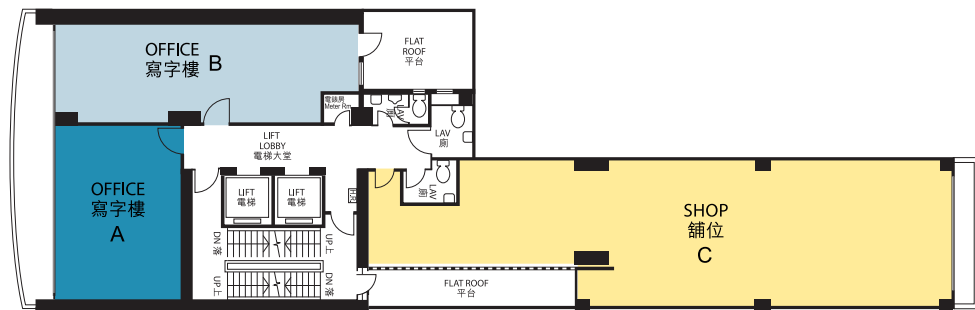
永樂街235商業中心
235 Wing Lok Street
Trade Centre

平面圖
Floor Plans

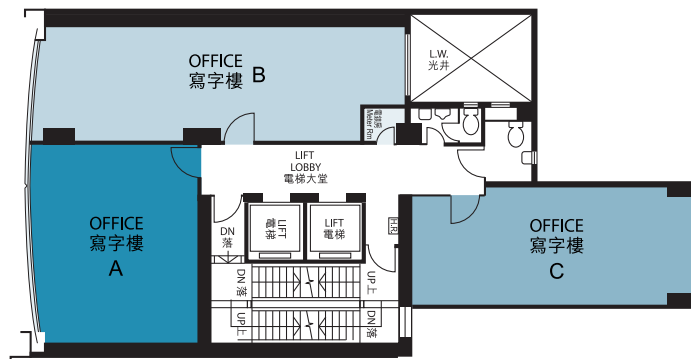
G/F
平面圖 Floor Plan



1/F
平面圖 Floor Plan



2/F - 28/F
平面圖 Floor Plan (不包括 Excluding 4/F, 14/F, 24/F)



大廈擁有完善的交通網絡，包括地鐵、巴士、電車，毗鄰港澳碼頭及西區海底隧道、中環及灣仔繞道，快捷可靠，方便租戶。

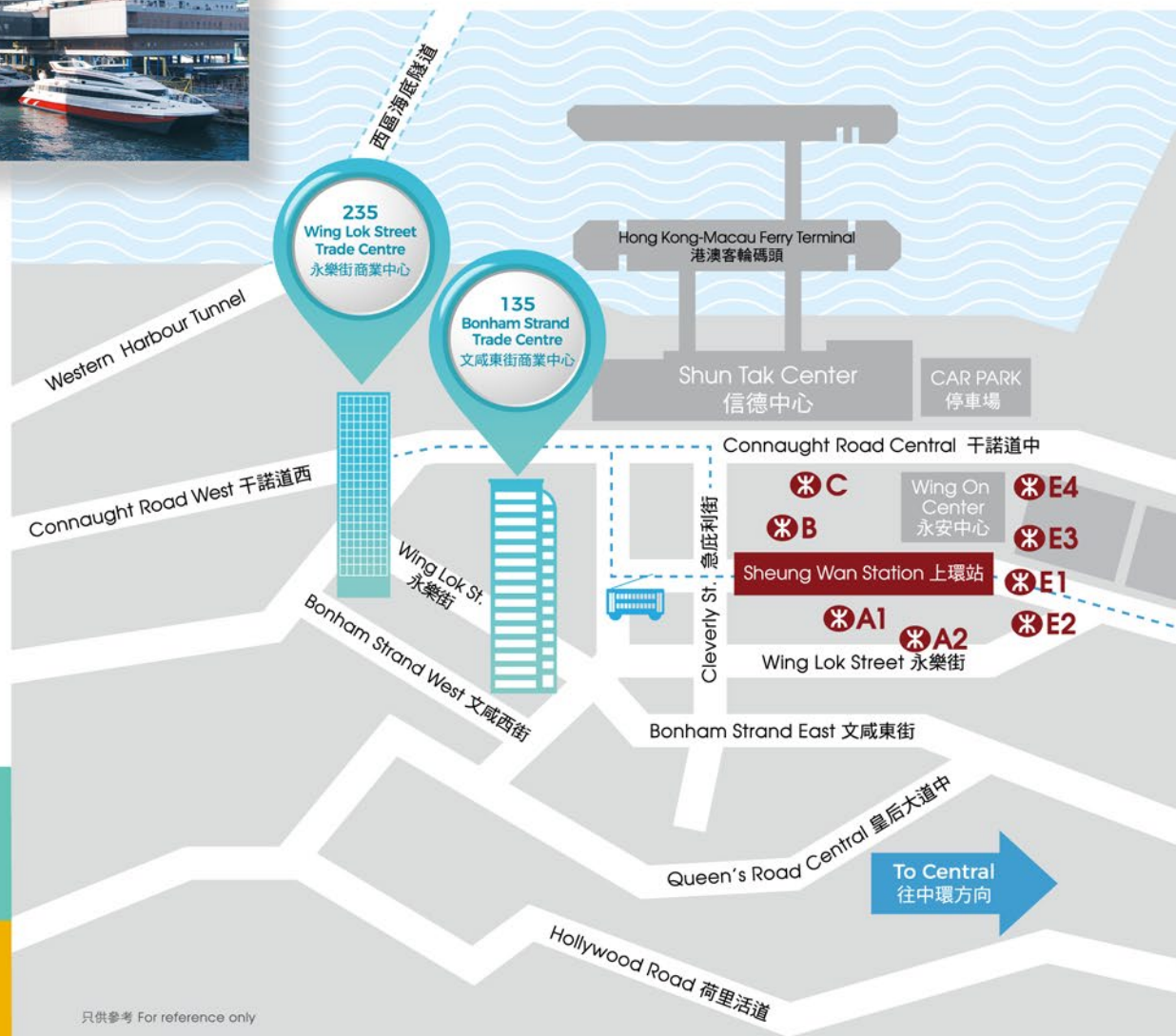
Tenants will benefit from an extensive transportation network which includes MTR, buses, trams, Hong Kong - Macau Ferry Terminal, the Western Harbour Tunnel and Central - Wan Chai Bypass.



優越的地利 A Truly Superb Location

物業位於文咸東街、文咸西街及永樂街的交匯處，毗鄰西區海底隧道，地鐵、巴士、小巴、渡輪、電車等公共交通一應俱全，盡享地利之便。經由上環地鐵站往返中環及尖沙咀非常方便。前往內地及世界各地，亦可利用港澳碼頭及中環的機場快線香港站。

Strategically located at the busy intersection of Bonham Strand and Wing Lok Street, the property is well served by various public transportation such as MTR, buses, minibuses, ferries, trams and the Western Harbour Tunnel. Central and Tsim Sha Tsui are easily accessible by Sheung Wan MTR Station, while China and the world can be reached via the Hong Kong - Macau Ferry Terminal and Central Airport Express Station.



Leasing Enquiries 租務查詢

3669 2788

leasing@hendersonsunlight.com



SUNLIGHT REIT

陽光房地產基金

Henderson Sunlight Property Management Limited

恒基陽光物業管理有限公司

Estate Agent's Licence (Company) 地產代理牌照(公司) C-024300

物業編號 **Property Code: PB0010 & PW0049**

廣告日期 **Advertisement Date: 22-3-2021**

於本小冊子內，除非文義另有所指，
否則一切載列之面積均指可出租總面積。
所列之面積未經核實，以現場量度為準。

In this brochure, unless the context
otherwise requires, all areas quoted
mean Gross Rentable Areas.
The areas quoted have not been verified
and shall subject to site measurement.