



Let Your Business Flourish
讓您的業務綻放異彩

人流暢旺 遠近皆至 Attention from Everywhere



上水中心購物商場樓高2層，面積逾12萬平方呎；商場坐落於上水市中心交通樞紐，四周住宅林立，地點絕佳，人流暢旺，為區內主要消閒熱點；再加上與羅湖邊境通道及落馬洲口岸僅一站之隔。

上水中心購物商場貼鄰港鐵上水站，與羅湖及落馬洲關口只相距短短5分鐘車程，自然成為旅客來港第一站。此外，上水本身是一個發展成熟的社區，人口約30萬，加上商場與多個屋苑連接，區內人流不斷。而區外居民乘搭巴士或小巴由元朗到上水，只需20分鐘，十分快捷。

Sheung Shui Centre Shopping Arcade well-located in the transportation hub of downtown Sheung Shui and surrounded by numerous housing estates. It is adjacent to Sheung Shui MTR station, and only a five-minute trip to Lo Wu or Lak Ma Chau. Therefore, Sheung Shui has become the first stop of individual visitors since the China government introduced the Individual Travel Scheme in 2003. Besides, Sheung Shui is a well-developed district with about 300,000 residents, attracting thousands of people to the shopping arcade from surrounding housing estates. Just 20 minutes from neighbourhood Yuen Long via bus/minibus.



消閒購物，時尚熱點

上水中心購物商場擁有過百間店舖和多間特色食肆；提供中菜佳餚、亞洲料理及地道港式美食等，大型個人護理用品專門店、保健產品店、電訊數碼產品店、連鎖時裝店。

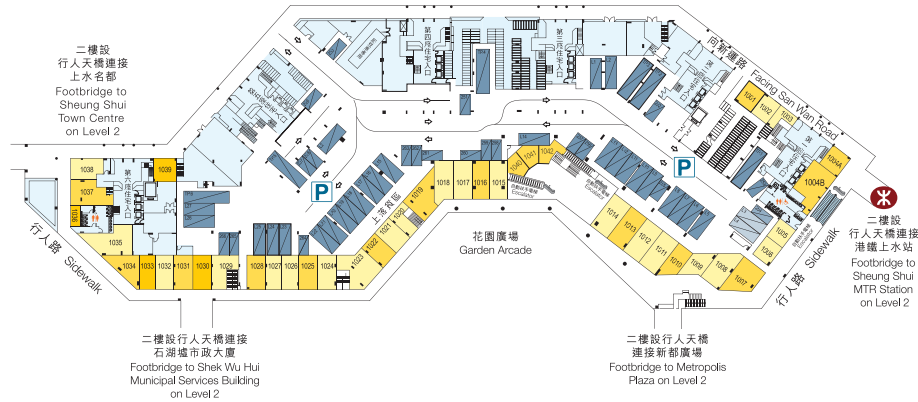
A Hot Spot for Leisure Shopping

Sheung Shui Centre is a one-stop shopping and leisure centre which offers a variety of food & beverage, and full range of products and services such as beauty & health care products, gifts & toys telecommunication, AV & digital appliances, fashion & related accessories.

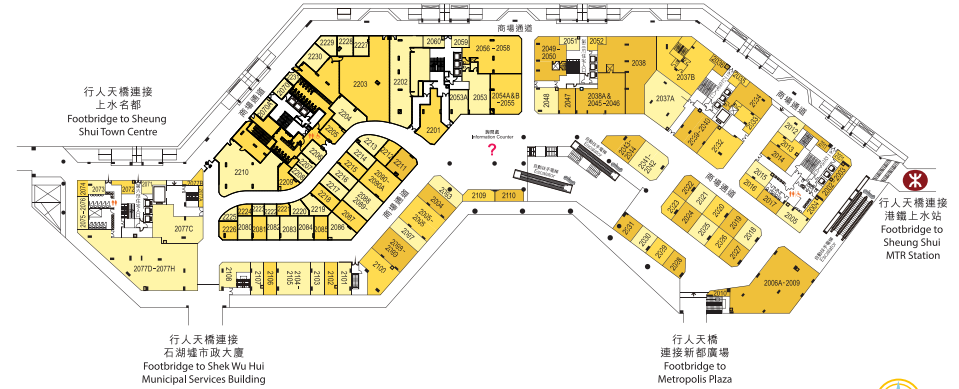


間隔靈活 選擇多樣 A Flexible Array of Spaces

G/F 平面圖 Floor Plan



L2 平面圖 Floor Plan



商場總面積逾120,000平方呎，分佈於2個樓層，間格多樣化，為租戶提供更多選擇。

The mall is approximately 120,000 sq. ft. over 2-floor retail area. It offers a wide range of area and layout choices.



恒基陽光物業管理有限公司的專業管理團隊一向以周全稱心服務見稱，質素被受好評。除提供全天候的管理及保安服務外，並為商場提供其他「增值」服務，經常舉辦各類主題推廣活動，增加商場人流，刺激顧客消費，為商戶締造更多商機。

Noted for being all-round and eager for fulfillment, the professional team Henderson Sunlight Property Management Limited is highly praised for the quality of its various extra promotional activities for tenants as well as its round-the-clock management and security services. It regularly hosts events with different themes to trigger more business opportunities by bettering the mall traffic and stimulating customer consumption.



上水中心購物商場交通配套完善，有蓋行人天橋連接區內主要建築物和住宅屋苑，港鐵上水站、巴士及小巴總站，前往港九新界各區及中國內地，十分便捷。商場設有大型停車場，提供約269個私家車位，6個上落客貨區及28個貨車位，租戶及駕車的消費者可來往自如。

Sheung Shui Centre shopping arcade has an excellent transportation network with routes easily reaching various districts in Hong Kong, Kowloon, New Territories and even crossing the boundary. Through covered footbridge, it is accessible from Sheung Shui MTR Station and the nearby bus & minibus terminal as well as the private and public housing estates in the neighbourhood. A spacious car park offering 6 loading/unloading bays for 269 carparking spaces and 28 lorry spaces provides convenience for both tenants and shoppers.



Leasing Enquiries 租務查詢

3669 2788

leasing@hendersonsunlight.com

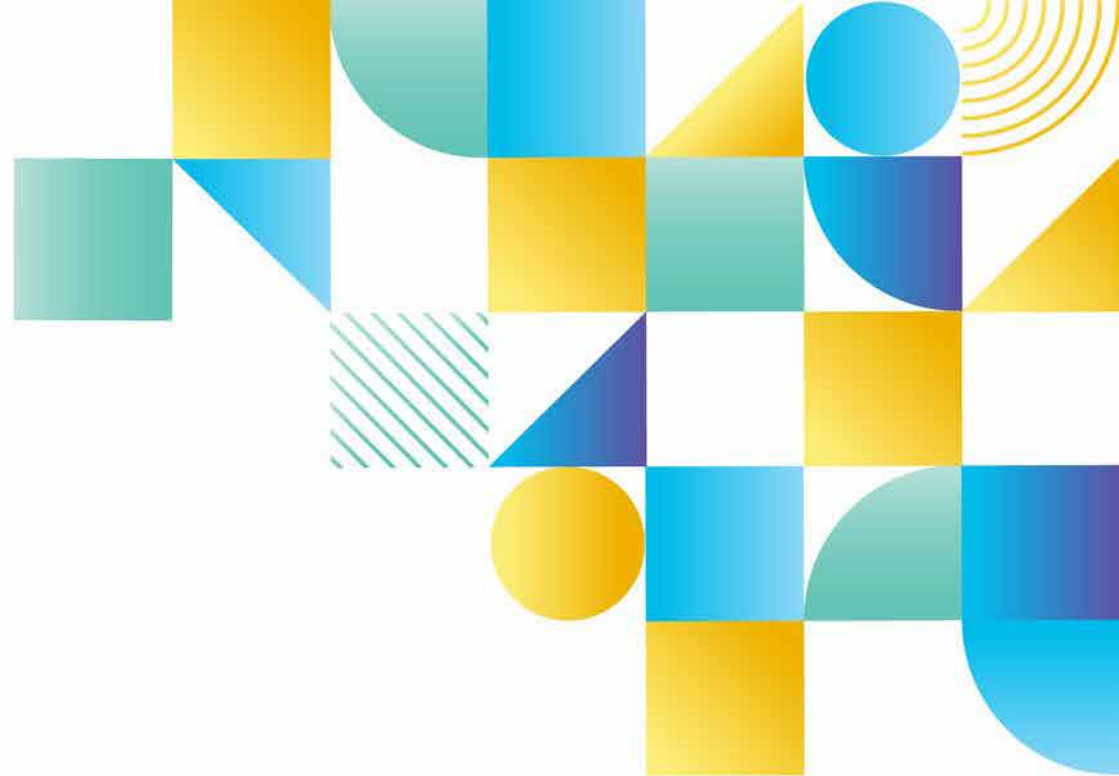


SUNLIGHT REIT

陽光房地產基金

Henderson Sunlight Property Management Limited
恒基陽光物業管理有限公司

Estate Agent's Licence (Company) 地產代理牌照(公司) C-024300



物業編號 Property Code: PS 0021

廣告日期 Advertisement Date: 21-5-2021

於本小冊子內，除非文義另有所指，
否則一切載列之面積均指可出租總面積。

In this brochure, unless the context
otherwise requires, all areas quoted
mean Gross Rentable Areas.