

Righteous Centre
富時中心

The Harvest
豐怡中心

@Mong kok 旺角



Shape Your Business Needs
塑造您的業務需求

585 & 591 Nathan Road, Mong Kok 旺角彌敦道585號及591號



Righteous
Centre
富時中心

物業概覽

富時中心於1996年正式啟用，為一幢樓高26層的高級商廈；位於繁華的旺角商業零售區的心臟地帶。炫目的外牆，加上各種便利的公共交通，令富時中心成為彌敦道上一大名廈。

Property Facts

Opened in 1996, Righteous Centre is a 26-storey high quality office building in the heart of the bustling Mongkok commercial district. With its striking arch-motif facade, gorgeous lobby and easy accessibility by all forms of public transport, the property is one of the renowned commercial building on Nathan Road.

一應俱全的商業設施

所有辦公單位均預先安裝獨立分體冷氣機，部分精選單位更附設私人洗手間及來去水設備，為租戶締造便利的工作環境。

A Full Range of Facilities

All office units are equipped with split-type airconditioners. Tenants in selected units will also enjoy the added convenience of private washrooms, water supply & drainage facilities in their working environments.

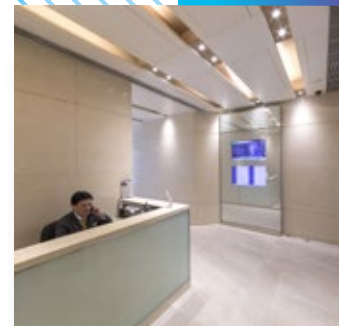


多樣化的樓層設計

大廈可出租總面積約為51,767平方呎，分佈於22個辦公樓層及地下至三樓的零售區。可出租面積由384平方呎的獨立單位至整層1,957平方呎不等，間隔靈活實用。除適合一般辦公室用途外，亦宜作美容、教育、旅遊等服務行業。

A Choice of Flexible Floor Plans

The property offers a total Gross Rentable Area of approximately 51,767 sq. ft. spreading across its 22 office floors and G/F to 3/F retail floors. Spaces range from 384 sq.ft. individual units to 1,957 sq. ft. entire floors. An effective floor layout offers flexible floor division and are suitable for pure office, beauty, education, travel and all kinds of service industry.

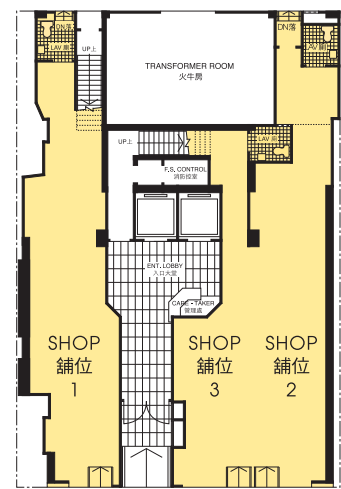


富時中心 Righteous Centre

平面圖 Floor Plans



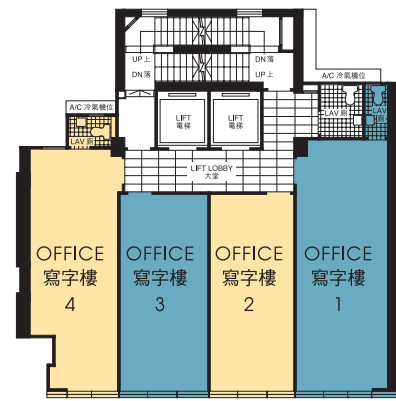
G/F
平面圖 Floor Plan



1/F-3/F
平面圖 Floor Plan




5/F-7/F
平面圖 Floor Plan



8/F-25/F
平面圖 Floor Plan



Facing Nathan Road
向彌敦道



The Harvest 豐怡中心

物業概覽

豐怡中心為一幢樓高21層的商廈；位於繁華的旺角商業零售區的心臟地帶。加上各種便利的公共交通，令本物業成為區內一大營商理想地點。

Property Facts

The Harvest is a 21-storey office building in the heart of the bustling Mongkok commercial district. With its easy accessibility by all forms of public transport, the property is a superb business space in the district.

全新裝修及設施

所有辦公單位均預先安裝獨立分體冷氣機，更附設獨立洗手間及來去水設備，為租戶締造便利的工作環境。

Brand New Renovation and Facilities

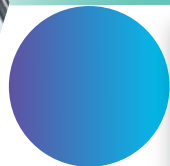
All office units are equipped with split-type air-conditioners, together with private washrooms, water supply & drainage facilities.

多元化的樓層設計

辦公樓層每層可出租面積為1,256平方呎（17至20樓）及1,500平方呎（5至16樓），無柱設計，間隔靈活。除適合一般辦公室用途外，亦宜作美容、教育、醫療等服務行業。

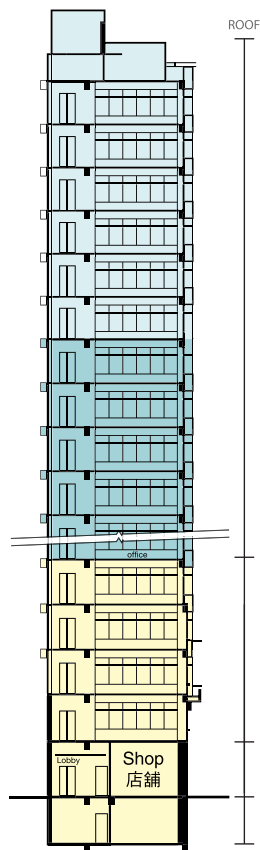
Column-Free Design & Flexible Layout

Floor plate ranges from 1,256 sq. ft. per floor (17/F to 20/F) to 1,500 sq. ft. per floor (5/F to 16/F). Column free layout offers flexible sub-dividing options which are suitable for general office, beauty, education, medical and all kinds of service industry.



Basement & G/F - 1/F

側視圖
Side View



Changsha Street
向長沙街

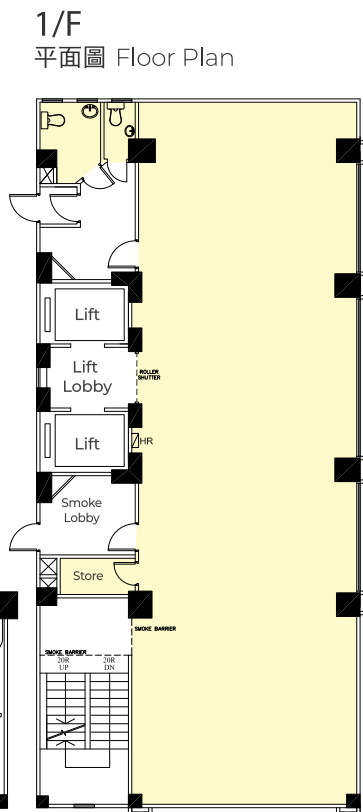
Leased Area

1/F
平面圖 Floor Plan

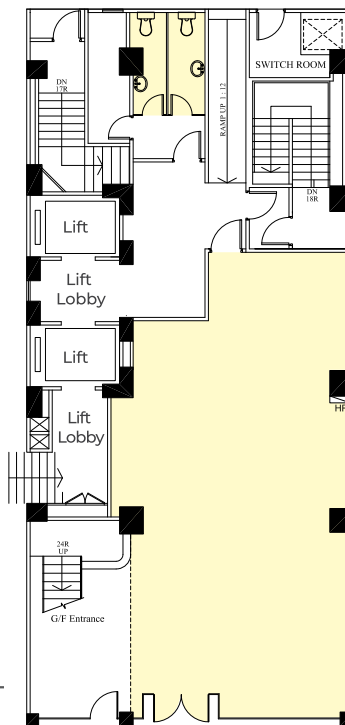
G/F
平面圖 Floor Plan

Basement
平面圖 Floor Plan

平面圖
Floor Plan

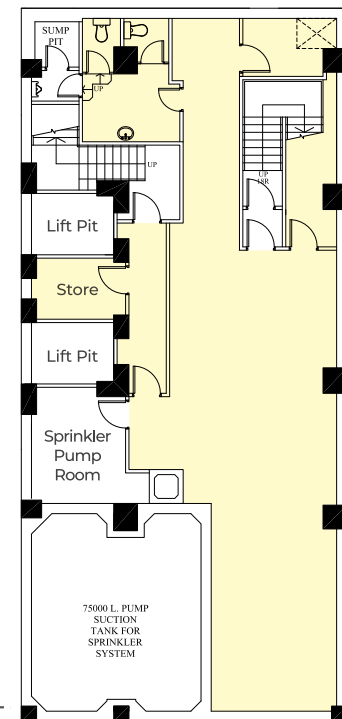


G/F
平面圖 Floor Plan



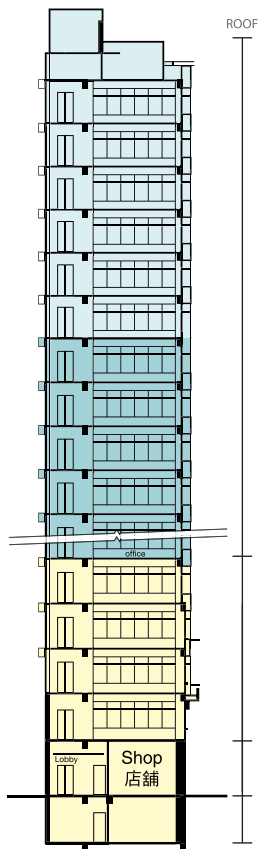
Facing Nathan Road
向彌敦道

Basement
平面圖 Floor Plan



2/F - 4/F

側視圖 Side View



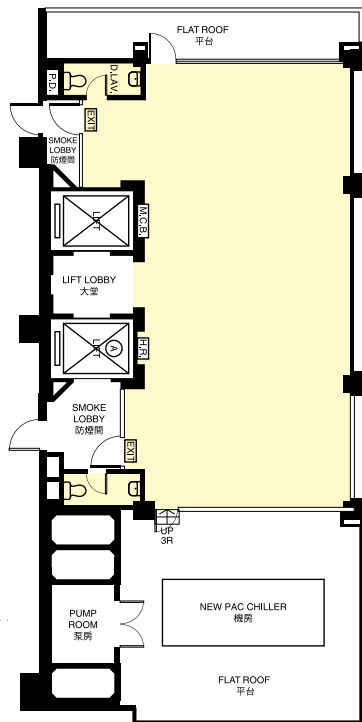
平面圖 Floor Plan

Changsha Street
向長沙街

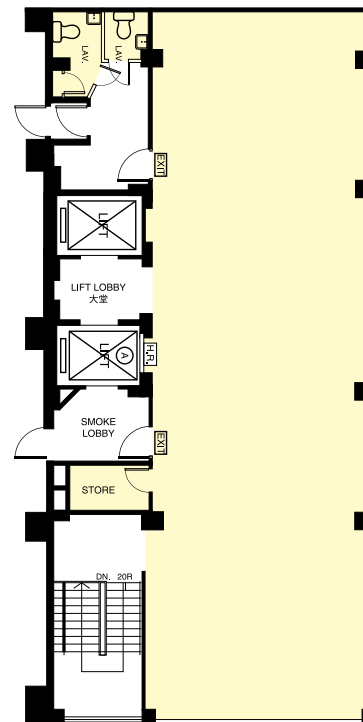
Leased Area

2-4/F
平面圖 Floor Plan

4/F 平面圖 Floor Plan



2/F & 3/F 平面圖 Floor Plan

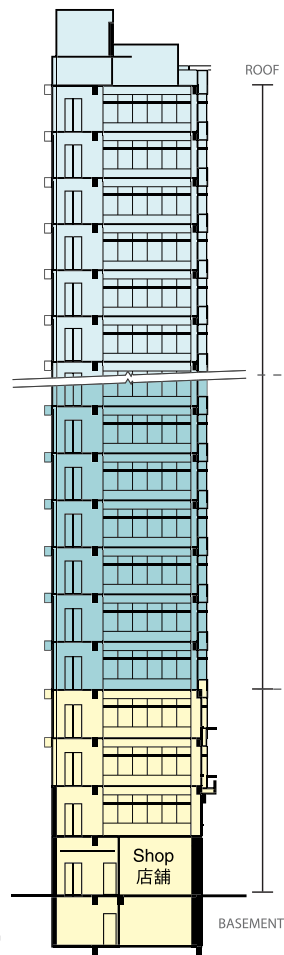


Facing Nathan Road
向彌敦道



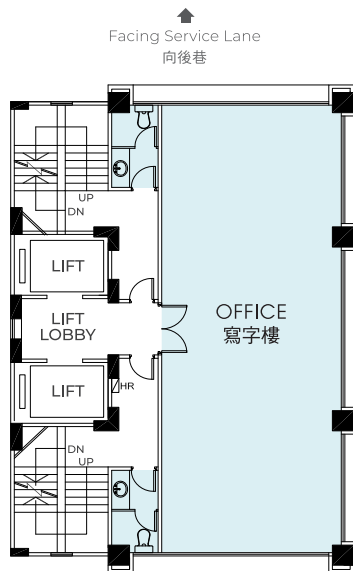
豐怡中心 The Harvest

側視圖
Side View

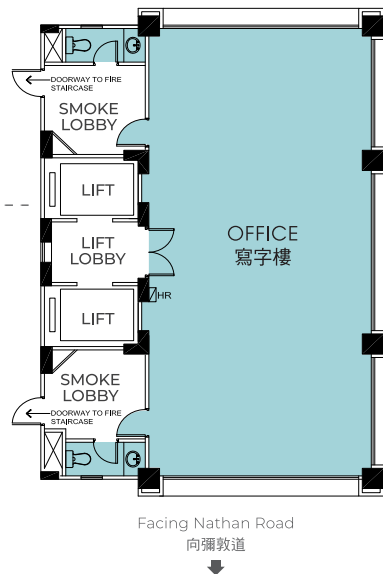


平面圖
Floor Plan

17/F - 20/F
平面圖 Floor Plan



5/F - 16/F
平面圖 Floor Plan



Changsha Street
向長沙街



優越的地利 A Truly Superb Location

物業坐擁旺角彌敦道，徒步數分鐘可達旺角港鐵站，交通極為方便；使用附近的港鐵旺角東站可快速抵達新界及內地。

The property is located on Nathan Road and at the proximity to Mongkok MTR station. It is also at the transportation hub with many bus / mini bus stops at its doorstep. The New Territories and China are also easily accessible via the nearby Mongkok East MTR Station.







Leasing Enquiries 租務查詢

3669 2788

leasing@hendersonsunlight.com



SUNLIGHT REIT

陽光房地產基金

Henderson Sunlight Property Management Limited

恒基陽光物業管理有限公司

Estate Agent's Licence (Company) 地產代理牌照(公司) C-024300

物業編號 Property Code: PR 0005 & PF 0001

廣告日期 Advertisement Date: 24-2-2023

於本小冊子內，除非文義另有所指，
否則一切載列之面積均指可出租總面積。
所列之面積未經核實，以現場量度為準。

In this brochure, unless the context otherwise requires,
all areas quoted mean Gross Rentable Areas.
The areas quoted have not been verified and
shall subject to site measurement.